



Sorbent Dispenser Cart SDC 05

This Sorbent Dispenser Cart (SDC 05) has been designed for use wherever it is necessary to apply immediately powdered sorbents to treat accidental leakages of undesirable or harmful fluids (e.g. in chemical warehouses, petrol stations, etc.). The whole external case and top are made of metal, ensuring greater rigidity and strength and protecting the sorbent from rain.



- ▶ Immediate disposal of leaked hazardous substances thanks to the continuous readiness of the filled cart for use
- ▶ Metal construction of the cart perfectly protects the sorbent inside the hopper from moisture
- ▶ For all currently used sorbents (including light and fibrous materials)
- ▶ Adjustment for the thickness and breadth of flow
- ▶ Adjustable handle
- ▶ Stressed areas are strengthened



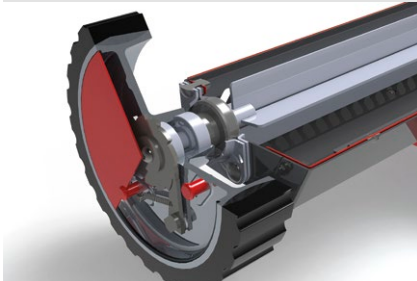
**Always ready to stop
accidental leakages
of undesirable
or harmful fluids**



Adjustable handle to suit different heights. Handle can be fixed in the extended position so that it will not come out by accident.



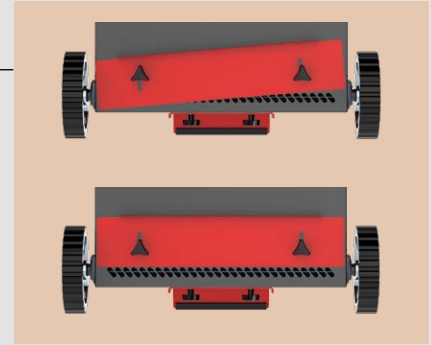
Anchor ensures stability of the cart while filling with sorbent.



A special gear allows application by moving the cart forward. Moving back automatically stops spreading (sorbent saving).



Adjustment for the thickness and breadth of flow, ensuring uniform application of sorbent.



Examples of use

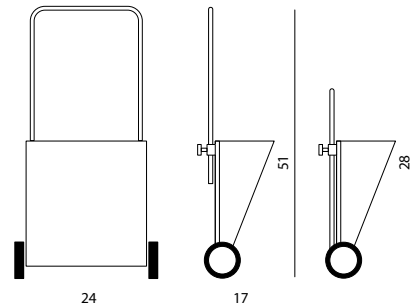


Top quality

Stressed areas are reinforced, strength materials are used, stainless steels, solid polyurethane, industrial bearings, the cart has a durable surface finish and the mechanism is specially protected against dust damage. See details in Instructions for use.

Attention!

This product is not intended for use with abrasive materials and de-icing salt! The cart must be cleaned after each use. Follow the Instructions for use.



Dimensions when deployed with handle extended (in) (width, depth, height)	24 × 17 × 28/51
Wheel diameter (in)	7
Maximum volume (gal)	17
Pack size (in)	26 × 17 × 31
Weight of empty cart (lb)	49

